

Workshop content overview

(ABRIDGED)



Workshop introduction

Overview included for high-level presentation content.

Introduction slide to workshop and LPC partnership lock-up.

Energy Evolution HS Workshop: A bird's-eye view

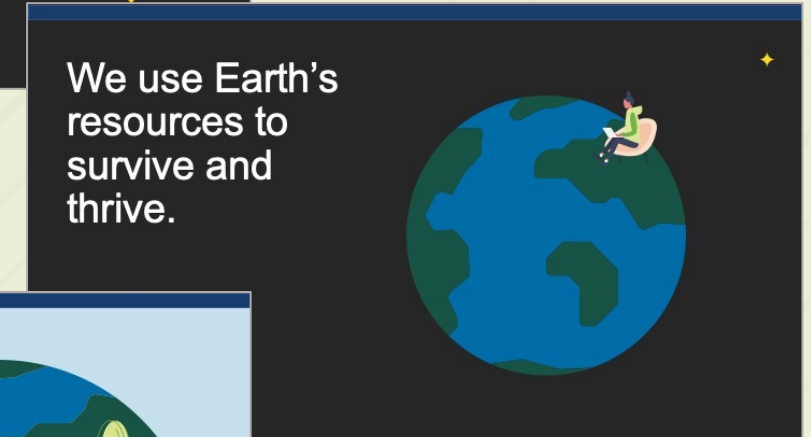
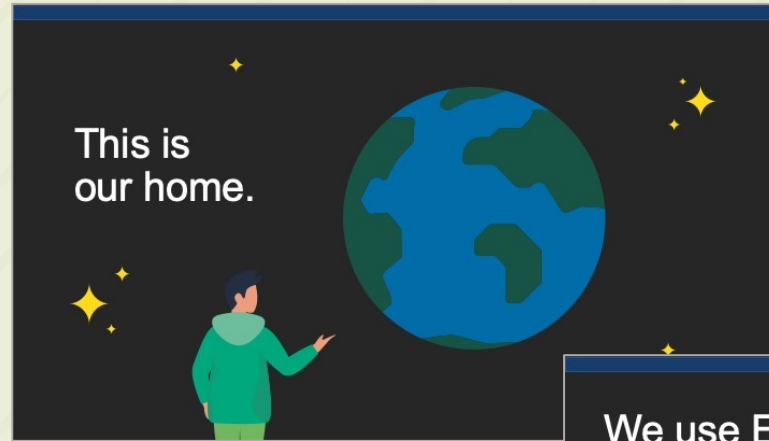
- 1. Lead with our purpose.**
Connect energy conservation to something students care about: Our environmental impact.
- 2. Orient and engage.**
Encourage students to get mentally involved by thinking critically about energy, beyond lights and outlets.
[Interactive element: Q&A](#)
- 3. Introduce TVA & power in our region.**
Touch on TVA's original charge, highlighting the progress TVA and LPCs have made on their focus on energy, environment and economic development.
[Interactive element: Trivia Q](#)
- 4. Show the environmental impact of using energy.**
 - Introduce our energy sources, help students understand where energy comes from and explain our relationship to our region's natural resources.
 - Use the power portfolio to highlight our progress toward greater sustainability through the introduction and use of carbon-free energy sources.
- 5. Expand their awareness.**
 - Help them understand the importance of energy conservation.
[Interactive element: Trivia Q](#)
 - Introduce our region's focus on energy conservation and the importance of local partnerships that support energy conservation.
- 6. Inspire students to lead change.**
 - Help students understand how they can reduce their individual environmental impact through energy conservation.
 - Explore energy-saving tips room by room.
 - Bust Energy Myths: [Interactive elements: True or False](#)
- 7. Educate on home energy use.**
 - Break down how energy use translates to money spent.
 - Brief overview of how energy bills are read.
 - Visualize how a kilowatt-hour is calculated.
- 8. Empower students with the information they need to get started.**
Challenge students to identify personal lifestyle changes through the survey, introduce the take-home kit and lead them to the website to access resources throughout their journey.
[Interactive element: Survey](#)



The slide features an illustration of two people, a woman in a green jacket and orange pants, and a man in a blue jacket and green pants, standing on either side of a glowing globe. Above the globe is the text 'TVA EnergyRight' and below it is 'High School Energy Workshop'. The background is split into a light blue left half and a yellow right half with a pattern of small yellow circles. At the bottom right, there are logos for 'TVA EnergyRight' and 'CBE LIGHTBRAND'.

Lead with our purpose.

Connect energy conservation to something students care about:
reducing our environmental impact.

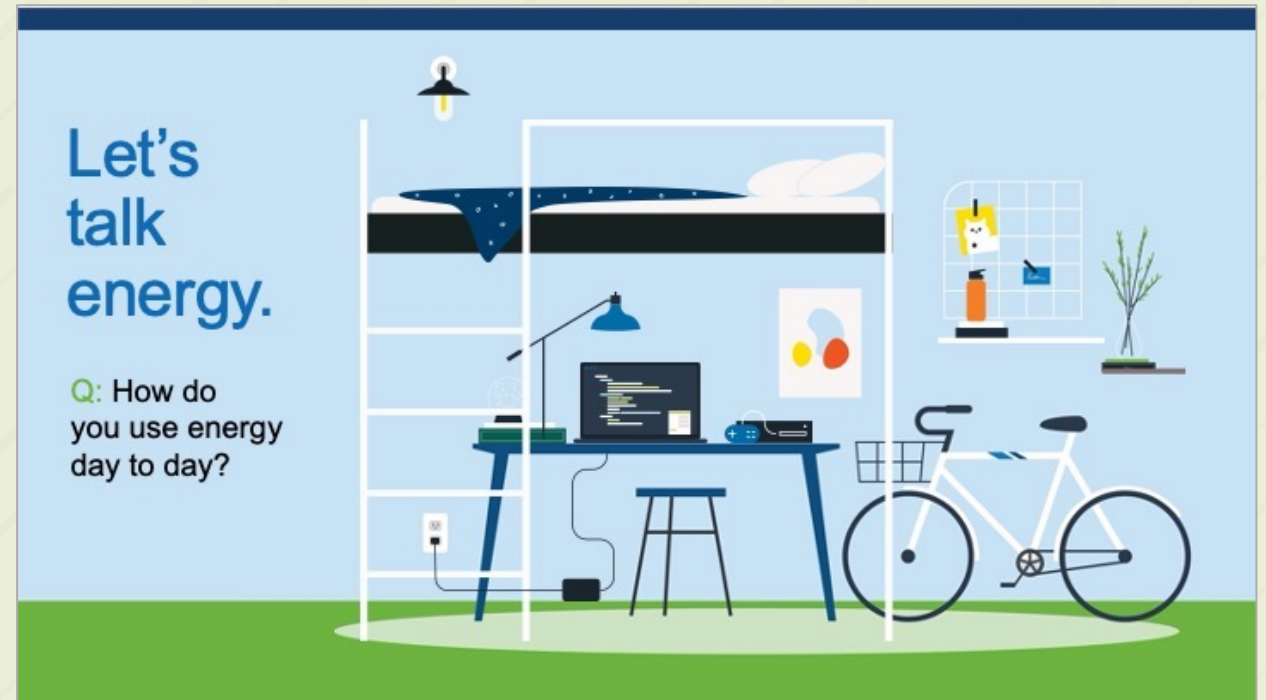


Orient and engage.

Encourage students to get mentally involved by thinking critically about energy, beyond lights and outlets.

Start a conversation by brainstorming ways we use energy.

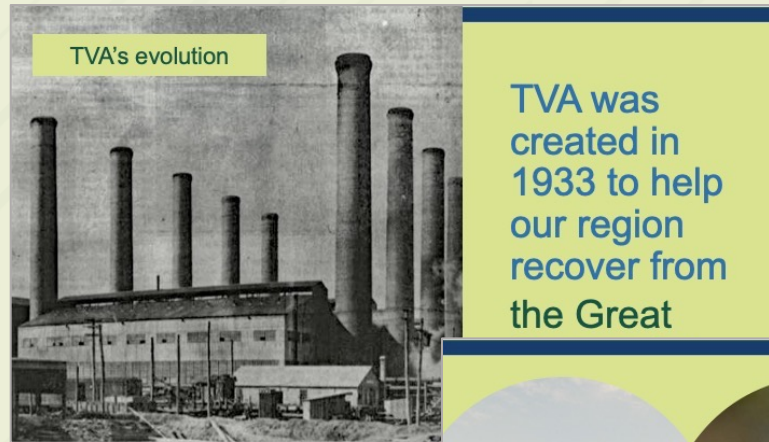
(Slide with interactive element)



Introduce TVA and power in our region.

TVA's mission is to make life better for the people who live and work in the Tennessee Valley. We do this in three areas: Energy, Environment and Economic Development.

We're able to do all of this because of partnerships with local power companies.




Show the environmental impact of using energy.

Introduce our energy sources, help students understand where energy comes from and explain our relationship to our region's natural resources.

(Slides with interactive element)

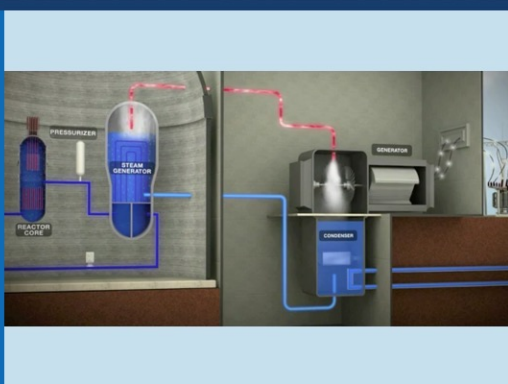
TVA-generated energy comes from:

Hydroelectric plants



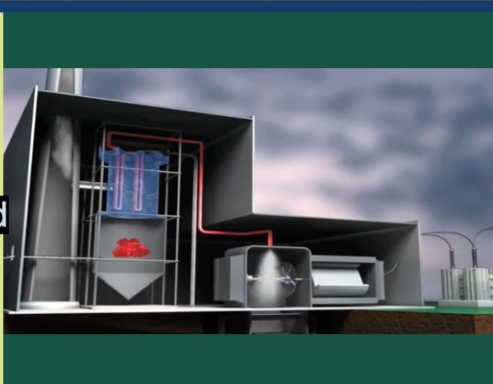
TVA-generated energy comes from:

Nuclear plants



TVA-generated energy comes from:

Coal-fired plants



TVA-generated energy comes from:

Solar arrays



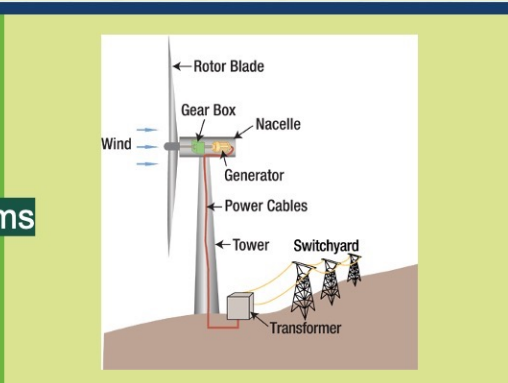
TVA-generated energy comes from:

Natural gas plants



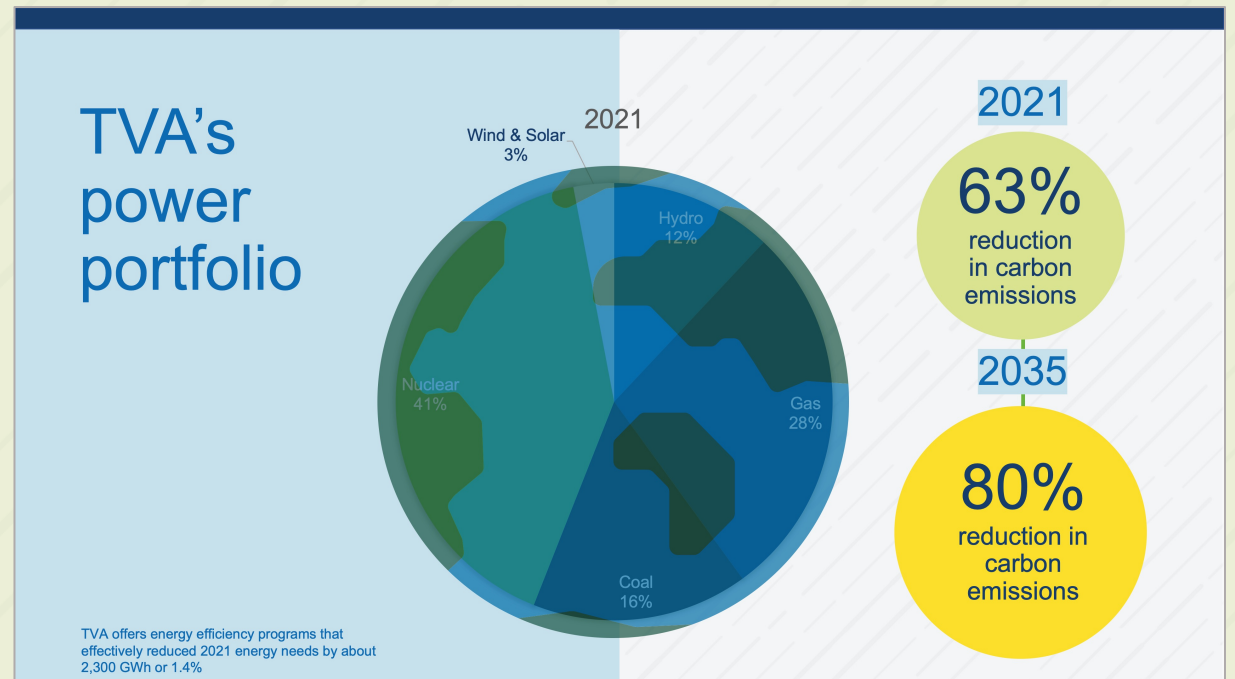
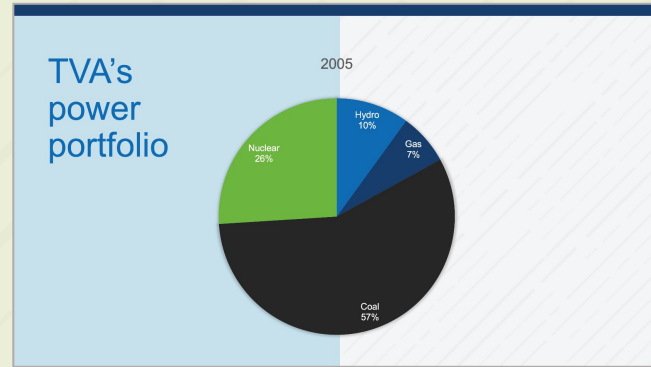
TVA-generated energy comes from:

Wind farms



Show the environmental impact of using energy.

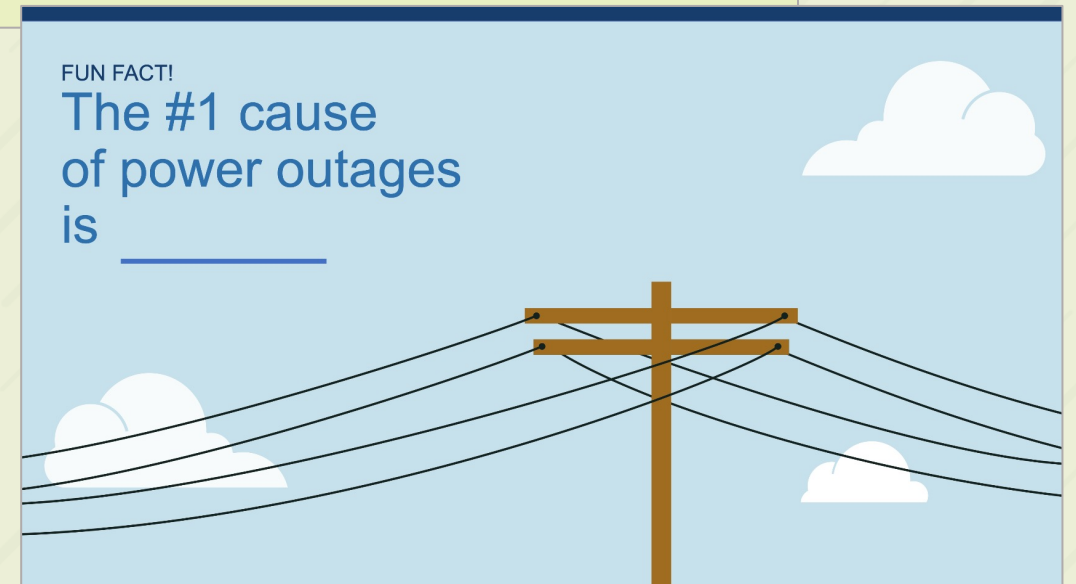
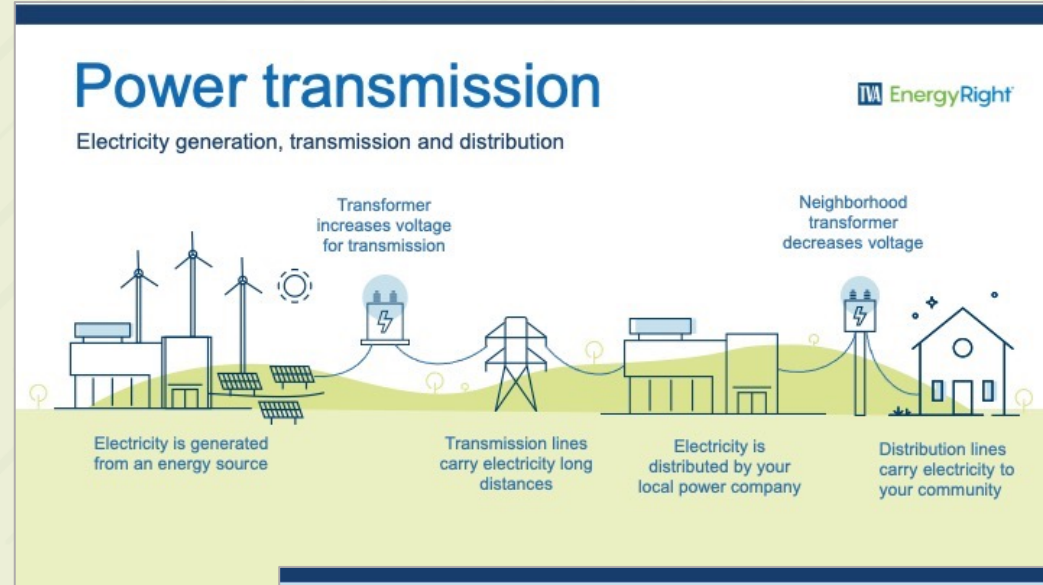
Use the power portfolio to highlight our progress toward greater sustainability through the introduction and use of carbon-free energy sources.



Expand their awareness about power.

Help them understand how power works by explaining the power transmission journey.

(Slides with interactive trivia questions)



Expand their awareness about power.

Introduce our region's footprint and the reach of our power grid. Highlight the local partnerships that make it possible to deliver power across the Valley.



Who is CDE Lightband

- CDE Lightband serves over 72,000 households and businesses in the City of Clarksville
- The company's municipal service area consists of 100 square miles and includes 971 miles of power lines
- CDE Lightband offers electricity, internet, video and voice services
- 24/7 local support



EnergyRight


The complex block contains the CDE Lightband logo, a title 'Who is CDE Lightband', a bulleted list of service details, a photograph of a utility worker, and the EnergyRight logo.

Example slide for a local power company

Inspire students to lead change.

Help students understand how they can reduce their individual environmental impact through energy conservation.

So, back to the big picture.



Energy consumption is a major source of carbon emissions.


Weather patterns are getting more extreme.

Human activities contribute to a warming atmosphere and oceans.


Temperatures are predicted to continue rising.

Together, we can make a

What's your carbon footprint?



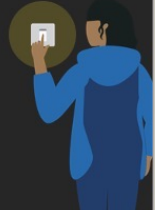
Your carbon footprint = the total carbon dioxide generated by your actions.



Your home's carbon footprint = the total carbon dioxide generated by your home and all who live there.

How do we make an impact?

By conserving more energy.



Inspire students to lead change.

Explore energy saving tips room by room.

In your room.

Shut down your electronics at night.

In the kitchen.

Use the dishwasher instead of hand washing.

Help your whole house out.

Keep outside doors closed.

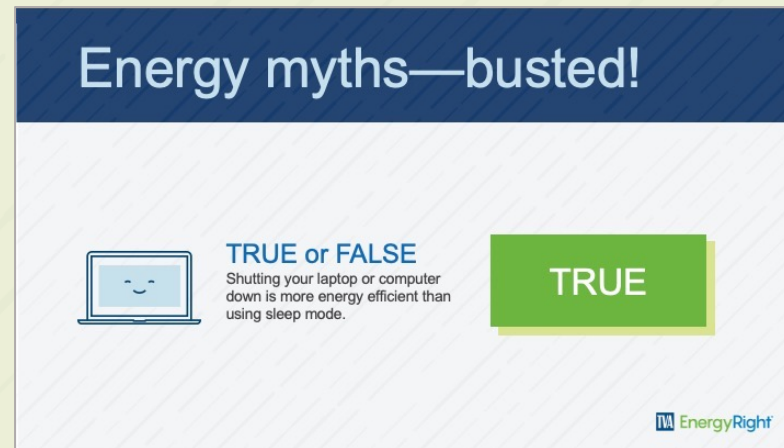
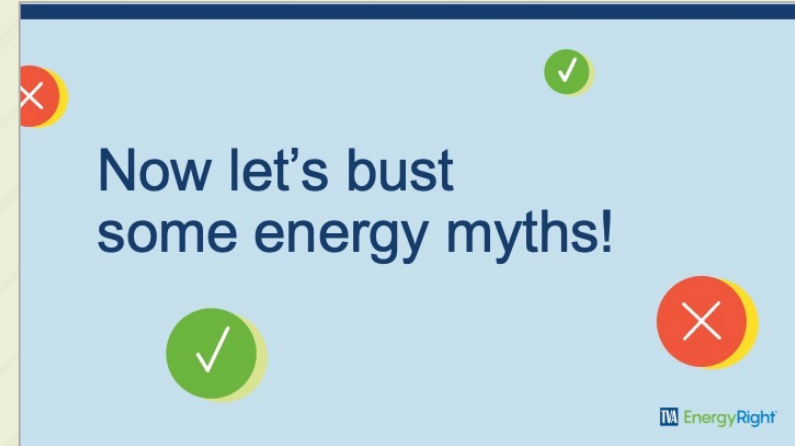
78°



Inspire students to lead change.

Bust energy myths.

(Slides with interactive elements:
True or False)



Educate on home energy use.

Break down how energy use translates to money spent.

Brief overview of an electric utility bill.

Explain what a kilowatt-hour is and how it's calculated.



Empower students with the information they need to get started.

Challenge students to identify personal lifestyle changes through the survey, introduce the take-home kit and lead them to the website to access resources throughout their journey.

(Slide with interactive element: Survey)

